

## Aduro Duopur-Base

2505

Solvent-based 2-component polyurethane primer for furniture and interior finishing for industrial and professional use

### PRODUCT DESCRIPTION

Product number(s)

2505000200

#### General

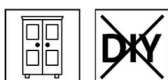
2K-polyurethane-polyester resin primer with excellent filling power, good accentuation of the wood, very fast drying and excellent grindability. The product is also characterized by excellent stability on vertical surfaces and good workability.

#### Special properties and standards



- French ordinance DEVL1104875A regarding the marking of construction coating products for their emission of volatile pollutants: A+

#### Application areas



- Primer for full-bodied applications for furniture and interior finishing.
- Aduro Duopur-Base 2505 shows a slight inherent yellowing, which can be disturbing on light woods or light stains.
- Not suitable for the coating of surfaces bleached with hydrogen peroxide.

### PROCESSING

#### Instructions for use



- Please stir the product before use.
- The temperature of the product and object, and the room temperature must be at least + 10 °C is necessary.
- For extremely full bodies, two spray coats with Aduro Duopur-Base 2505 are required, whereby the first coat should not be too saturated.
- Please observe our **ARL 131 - Working guidelines for PUR furniture paints.**

08-22 (supersedes 10-21) ZKL 2505

ADLER-Werk Lackfabrik, A-6130 Schwaz  
Phone: 0043/5242/6922-190, Fax: 0043/5242/6922-309, email: [technical-support@adler-lacke.com](mailto:technical-support@adler-lacke.com)

Our instructions for use are based on knowledge available currently and shall guide the buyer/user to the best of one's knowledge, but, however, must be clarified for the areas of application and processing conditions on a case-to-case basis. The buyer/user is responsible for deciding on the suitability and use of the delivered product, which is why it is recommended to produce a sample to check the suitability of the product. Our general terms and conditions of sale are otherwise applicable. All previous data sheets are rendered invalid with the issue of this one. Rights reserved for the modification of the container sizes, colour shades and degrees of gloss available.

**Blending ratio**

50% 8207 000210

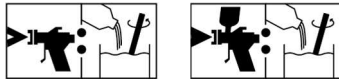
2 parts by weight Aduro Duopur-Base 2505  
1 parts by weight of Aqua-Hardener 8207

Aduro Duopur-Base 2505 can only be used with a hardener and in the mixing ratio specified. Deviations lead to film and adhesion problems.

**Pot life**

4 hours;

A further extension of the pot life is not possible. Increased temperatures reduce the pot life.

**Application technique**

0-5% 8008 000210 10% 8008 000210

Application method	Airless	Airless air-supported (Airmix, Aircoat, etc.)	Compressed air
Spray nozzle (ø mm)	0.28 - 0.33	0.28 - 0.33	1.8
Spraying pressure (bar)	100 - 120	100 - 120	2.0 - 3.0
Atomized air (bar)		1 - 2	
Dilution (thinning)	Duopur-Thinner 8008 000210		
Thinner-added in %	0 - 5	0 - 5	10
Viscosity (sec.): 4-mm-cup, 20°C	approx. 30	approx. 30	approx. 18
Quantity per application (g/m <sup>2</sup> )	approx. 100 - 150		
Total quantity applied:	max. 450 (3 applications)		

The shape and properties of the substrate affect the consumption/yield. Accurate values for consumption must be obtained by applying trial coats in advance.

**Drying times**

(at 23 °C and 50 % rel. humidity)



Sandable and recoatable	after approx. 2 hours
Stackable	after approx. 12 hours

In order to improve the firmness of the subsequent coat, we recommend drying overnight at room temperature.

The figures given above are reference values. The drying time depends on the coat thickness, temperature, air exchange and relative atmospheric humidity.

Lower temperatures and/or high level of atmospheric humidity can increase the drying time.

**Cleaning the working equipment**

Immediately after use with Duopur-Thinner 8008 000210 or Waschverdünnung 80077.

**SUBSTRATE**

**Type of substrate** Hard and softwood (solid wood, veneered-, wood shaving (coated) - or wood fibre materials)

**Substrate property (or condition)** The substrate must be dry, clean, capable of holding the paint, free from separating substances such as grease, wax, silicone, resin etc. and free from wood dust, as well as tested for suitability for coating.

**Preparation of the substrate** **Hardwoods:** Wood sanding grit size 150–180  
**Softwoods:** Wood sanding grit size 100–150

**COATING SYSTEM**

**Primer** 1 x Aduro Duopur-Base 2505

**Intermediate sanding** Sand primed surface with grit size 240 - 320.



Avoid sanding straight through!

Remove sanding dust.

Intermediate sanding must be carried out immediately before the subsequent coating is applied in order to ensure good intermediate adhesion.

**Topcoat** 1 x Aduro Duopur-Finish 2507

**MAINTENANCE of the complete coating system**

**Cleaning and maintenance** Cleaning with Clean-Möbelreiniger 96490 and preservation with Clean-Möbelpflege Plus 7222.

Please observe the relative technical data sheets of the products.

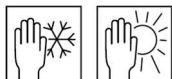
**ORDERING INFORMATION**

**Size of trading unit** 4 kg, 20 kg

**Supplementary products** Duopur-Hardener 8207  
Duopur-Thinner 8008 000210  
Aduro Duopur-Finish 2507  
Waschverdünnung 80077  
Clean-Möbelreiniger 96490  
Clean-Möbelpflege Plus 7222

**OTHER INSTRUCTIONS**

**Durability/storage** At least 1 year in the original sealed containers.



Make sure the product is protected against moisture, direct sunlight, frost and high temperatures (above 30 °C).

**Technical specifications**

Delivery viscosity	approx. 23 s in accordance with DIN 53211 (6-mm-cup, 20 °C)
Mixing viscosity	approx. 30 s in accordance with DIN 53211 (4-mm-cup, 20 °C)

---

### Safety-related information



Further information on the subject of safety during transport, storage and handling as well as disposal can be found in the relevant safety data sheet. The current version can be accessed on the Internet at **[www.adler-lacke.com](http://www.adler-lacke.com)**.

The product is only suitable for industrial and professional use.

In general, inhaling paint aerosols must be avoided. This is ensured by correctly using a breathing mask (combination filter A2/P2).

---